

# Profiled sheet T20-29W-1095

## For all types of buildings

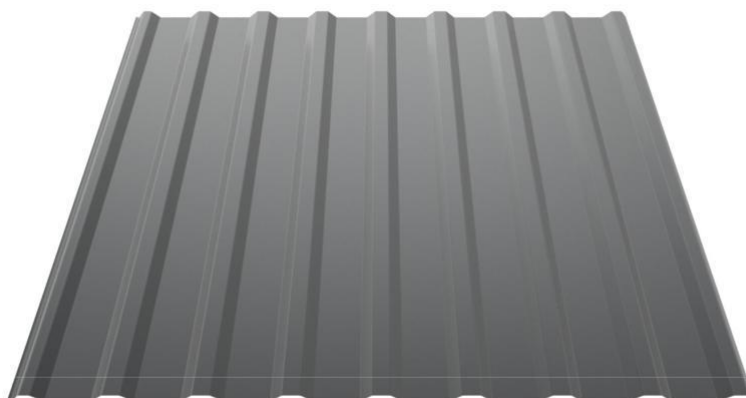
Profile T20 provides a straight lined solution for versatile roofing needs, ranging from modern private houses to refurbishment of rural buildings. Due to the linear and rigid form of the sheets, Profile T20 is aesthetically pleasing and easy to install, not only on new constructions, but also on existing rafters in renovation applications.

Available in Ruukki Quality Classes/variations: Ruukki 50 Plus, Ruukki 40, Ruukki 30 and Ruukki 30 Matt.

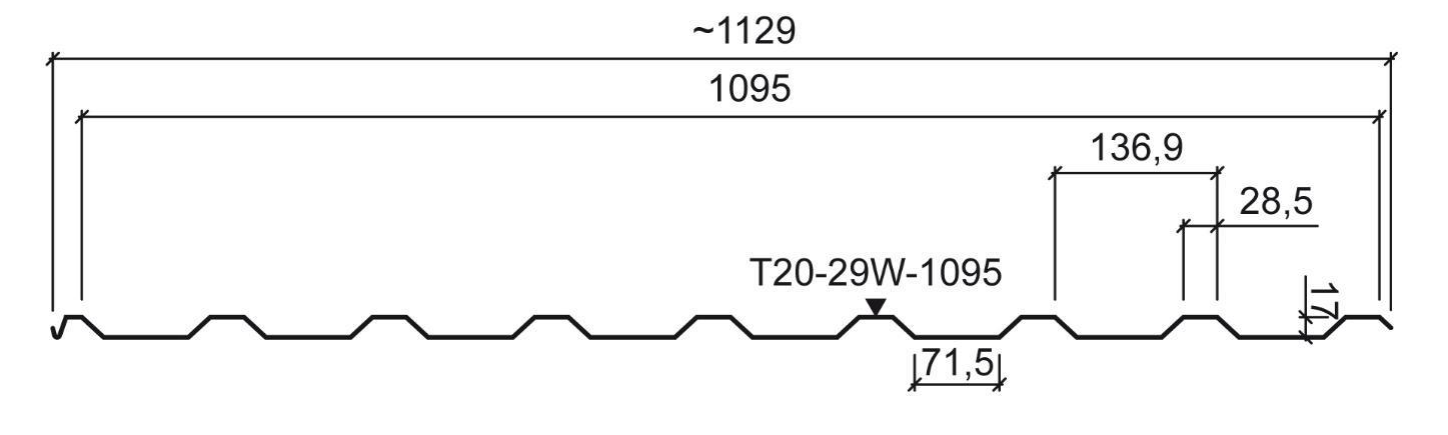
Product colour chart availability:

Ruukki 50 Plus, Ruukki 40, Ruukki 30 Matt: RR2H3 Anthracite, RR29 Red, RR23 Dark Grey, RR32 Brown, RR33 Black, RR750 Tile Red, RR887 Chocolate Brown

Ruukki 30: RR2H3 Anthracite, RR29 Red, RR23 Dark Grey, RR32 Brown, RR33 Black, RR750 Tile Red, RR887 Chocolate Brown, RAL9006 Silver, RAL9010 White

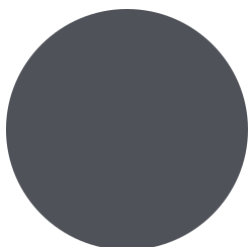


# Properties



Product code	T20-29W-1095
Profile Height	17 mm
Width of crown	28.5 mm
Effective width	1095 mm
Total width	1129 mm
Maximum length	12000 mm
Minimum length	600 mm
Material thickness / weight per m2	0.5 mm / 4.5 kg

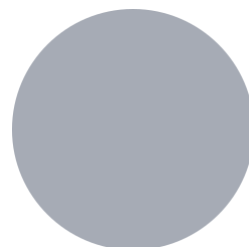
## Coatings and colors



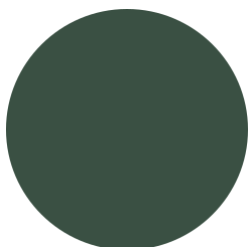
RR2H3 Anthracite



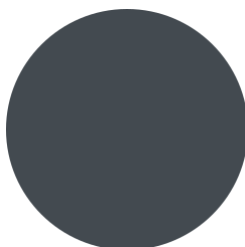
RAL9010



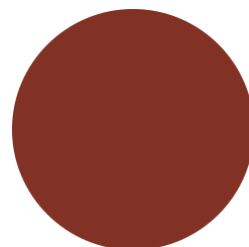
RAL9006 Silver



RR 11 Spruce Green



RR23 Dark Grey



RR29 Red



RR32 Dark Brown



RR33 Black



RR750 Tile Red



RR887 Chocolate Brown

## Download documents

